

Urban Delivery: Micro Depots for the “Last Mile”

Micro Depot Control and Store Logistics With platbricks®

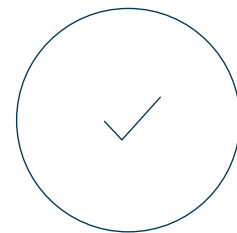
Initial Situation and Challenge

Ongoing megatrends influence the processes of daily goods supply - especially in our cities. About 77 percent of the German population already lives in cities or metropolitan areas. Due to the increasing online trade, which is expected to grow even further in the coming years because of the Covid 19 pandemic and its effects, shipments are increasing, especially there.

This development results in a higher demand for delivery vehicles. However, these are proving to be an ever-increasing burden on the traffic infrastructure in cities and contribute significantly to increased noise and emissions. Suppose we also consider the growing customer demands for individualized delivery times and locations in the B2C sector. In that case, it becomes clear that urban delivery concepts have to meet a wide range of requirements. It is essential to find the most innovative solutions possible for the trade-off between profitability goals and maintaining the quality of life in urban areas.

Micro-depots have, therefore, now developed into a promising core element of intelligent urban logistics. They act as additional transshipment points for goods within the associated delivery areas and are located either in central locations or on the city's outskirts. Goods are picked up and delivered over the „last mile“ using cargo bikes or electric vehicles. This keeps conventional delivery vehicles away from city centers and enables faster and more flexible delivery to the doorstep.

Advantages



- Low investment costs by setting up micro depots via Plug & Play with platbricks®
- Transparency and control along the supply chain through real-time access to inventory data and shipment tracking
- High degree of customization through flexible control of delivery windows, delivery location, and delivery options by the customer
- Automated processes with reduced lead times, flexible inventory management for any number of micro-depots, and optimized route planning
- Execution of all operational processes using a wide range of mobile devices
- Easy connection of platbricks® to your ERP and WMS systems via standardized APIs



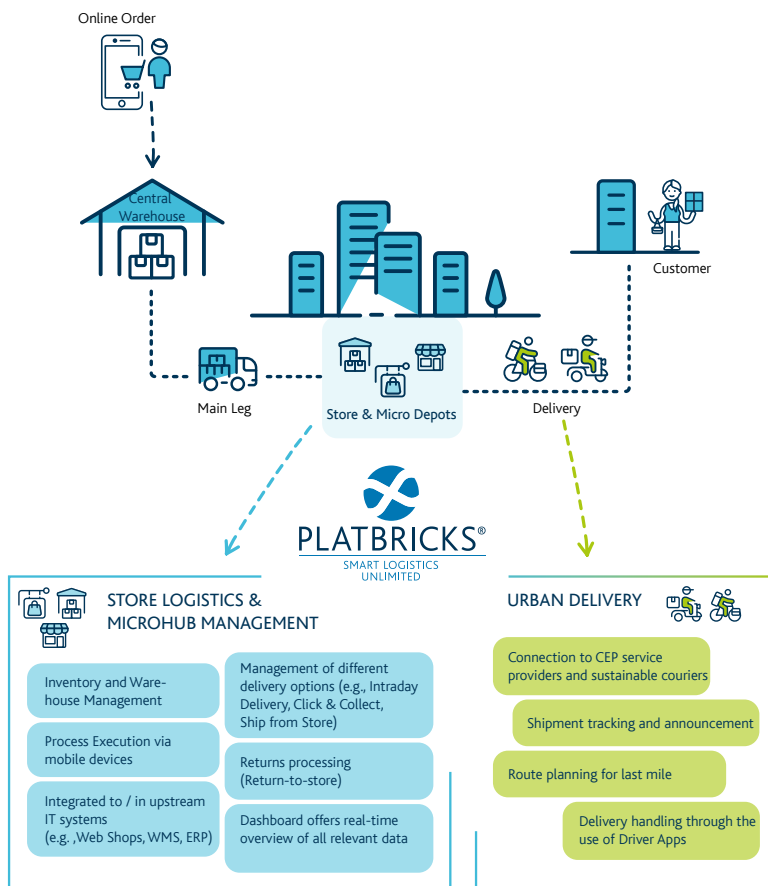


The well-functioning use of such micro depots for the supply chain is linked to the key challenge for companies in finding suitable locations for them. Against the backdrop of urbanization, storage space is in short supply, so multi-use of public spaces, setting up pick-up points in stores or mobile containers as depots have also been tried. In addition, complications can arise when multiple courier service providers share individual micro-depots.

Companies should therefore follow the path of digitization to efficiently plan and control the fulfillment processes in their micro-depots and the exchange of order and master data with upstream IT systems. Furthermore, courier services and route planning tools must be connected to the systems, and the customer can choose between various delivery options.

Store Logistics & Urban Delivery with platbricks®

Our Microsoft Azure-based cloud logistics platform platbricks® offers a straightforward and efficient solution for setting up micro depots. From goods receipt and inventory management to doorstep delivery, you access all urban supply chain processes via a central control center and mobile devices.



- Access to a wide range of courier services via a central interface
- Shipment recipients receive real-time updates via the live tracking page of tiramizoo incl. SMS / e-mail notification

Functional Overview

- Via the warehouse management, you can monitor and successfully execute all processes
- Via inventory management, you can fully control and manage your stocks (inventory and replenishment processes)
- The basic dashboard provides a real-time overview of current key figures (inventory overview, process costs, order monitor, lead times, CO² footprint, track & trace)
- The „any-device“ approach of our solution offers the possibility to use all mobile devices (Android, iOS, Windows) in the context of your logistic processes, e.g., for a goods receipt booking
- Connection to upstream IT systems, e.g., WMS of the central warehouse via standard APIs, as well as connection to sustainable delivery concepts/delivery couriers
- Route planning and status tracking
- Returns acceptance and processing

 [Watch the demo video now!](#)





Integrated Transport Management System for Urban Logistics by tiramizoo

platbricks® offers a fully integrated transport management system for urban logistics. This integration gives customers access to a diverse selection of courier services through just one central interface. But also, via the connection to the Last Mile Master of our partner, tiramizoo, drivers and couriers can be organized and optimized independently by the client. In addition, route and route planning can also be managed efficiently via the Route Optimizer. The recipients of the shipments receive real-time updates on the current status of the delivery via the Live Tracking Page of tiramizoo.

With the end-to-end IT solution from Arvato Systems and tiramizoo, urban delivery concepts can be implemented intelligently and efficiently. The real-time capability enables customers to always maintain an overview, even across all system boundaries.

About the Cooperation Between Arvato Systems and tiramizoo

As specialists in decentralized goods logistics, Arvato Systems and tiramizoo combine their strengths in an IT platform for operating local hubs with integrated logistics IT. By integrating tiramizoo's route planning technology into Arvato Systems' cloud logistics platform platbricks®, the process from warehouse to end customer is seamlessly digitized.

tiramizoo, founded in 2010, is a leading technology and platform provider for urban logistics, targeting traditional freight and parcel logistics with software-as-a-service solutions.



About platbricks®

With platbricks®, we at Arvato Systems have developed a cloud-based software solution with which processes can be planned, controlled, digitally executed, and intelligently evaluated internally in logistics and production and across companies along the supply chain. A unique feature of platbricks® is its modular structure. This enables a high degree of standardization in customer projects, fast implementation times, and the flexibility to implement customer-specific requirements at a reasonable price. For more information, please visit our website: www.platbricks.com



You have questions, need information or a contact?
Get in touch with us.

Arvato Systems | Pascal Leppich | Senior Sales Consultant & Business Development
Tel.: +49 5241 80-70770 | E-Mail: logistics@bertelsmann.de
arvato-systems.de

Global IT specialist Arvato Systems supports major companies in Digital Transformation. About 3,100 staff in over 25 locations stand for in-depth technology expertise, industry knowledge, and focus on customer requirements. Working as a team, we develop innovative IT solutions, transition our clients into the Cloud, integrate digital processes, and take on IT systems operation and support. As a part of the Bertelsmann-owned Arvato network, we have the unique capability to work across the entire value chain. Our business relationships are personal; we work with our clients as partners so that together we can achieve long-term success.

