

Image Hotspot

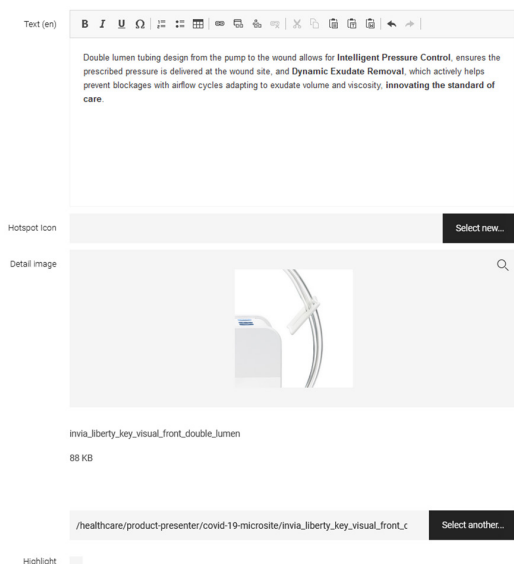
Again and again we find ourselves in a situation where we would like to focus more on individual details of a product image. With the Arvato hotspot component, this is now easily possible. We have extended the functionality of Magnolia DAM Assets to allow for additional meta information. Hotspots/markers can now be added per image.

Asset Name	Asset Type	Asset Description	Status	Created	Size
product-presenter	Image		Active	Jun 15, 2020	738
image-library	Image		Active	Jul 7, 2021	738
image-library-product	Image	Medical Image Library for product	Active	Jul 14, 2021	636
image-library-website	Image		Active	Jul 14, 2021	636
double-lumen-tubing	Image	Double lumen tubing	Active	Dec 16, 2020	946
quick-connector	Image	Quick connector	Active	Jan 22, 2020	437
pressure-options-from-40-to-300-mmhg	Image	Pressure options from 40 to 300 mmHg	Active	Jan 22, 2020	437
open-pump-connection-and-compact-design	Image	Open pump connection and compact design	Active	Jan 22, 2020	437
connectors-with-adapter	Image	Connectors with adapter	Active	Jan 22, 2020	437
secure-connector-connection	Image	Secure connector connection	Active	Jan 22, 2020	437
air-leak-indicator	Image	Air leak indicator	Active	Jan 22, 2020	437
conversion-carrying-case-for-easy-connector-exchange	Image	Conversion carrying case for easy connector exchange	Active	Dec 16, 2020	936

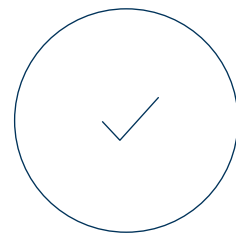
A marker has the following additional information:

- Title
- Detail marker image
- Position of the marker on the main asset
- Description text
- Define marker as a highlight

Marker icons can be stored globally or configured individually by marker. With this logic, sophisticated product presentations can be implemented.



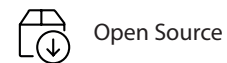
Benefits



Strategic Consulting in:

- Magnolia
- Design
- Apps (iOS & Android or Progressive Web App)
- Cloud Hosting
- Headless Systems with DXP based on Basis Magnolia & Angular
- Magnolia Sales Automation based on SAP or Salesforce

Additional benefits



Open Source



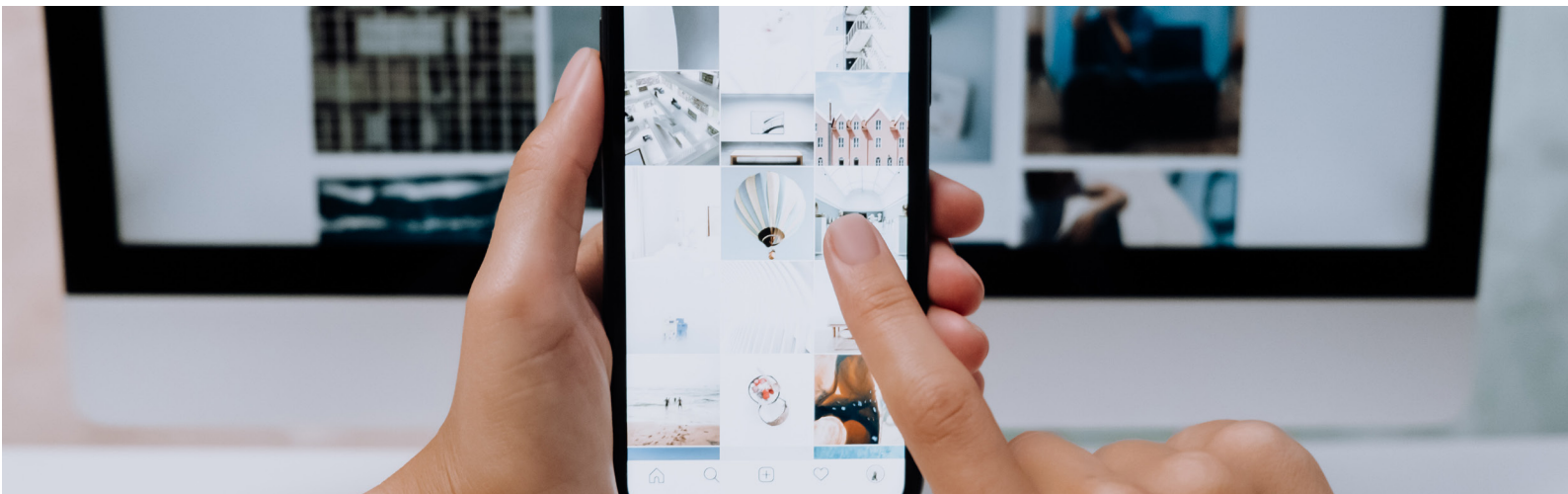
Continuous Updates



Support



Customization



In the frontend, we offer a good starting point with a blueprint integration to tackle your individual implementation.

We will be happy to advise you on how this module can best be used for you. If necessary, we can also support you with the integration into your individual Magnolia environment.



Quick-connector

Invia Quick-connector features a secure tubing connection with an audible click.



WITH GENTLE-ON-SKIN SENSPEARLS™

SWISS QUALITY
Developed with experts and made with love in Switzerland



ORTHODONTIC
Flat, symmetric teat for free tongue movement. Thin shaft minimises space between upper and lower jaws



HIGH ACCEPTANCE
9 out of 10 babies love it



LIGHTWEIGHT
Less stress on orofacial muscles



You have questions, need information or a contact?
Get in touch with us.

Arvato Systems Schweiz | Roland Pommer | CEO
Phone: +41 44 307-1401 | Email: roland.pommer@arvato-systems.ch
arvato-systems.ch

Global IT specialist Arvato Systems supports major companies through digital transformation. More than 3,000 staff in over 25 locations epitomize in-depth technology expertise, industry knowledge and focus on customer requirements. Working as a team, we develop innovative IT solutions, transition our clients into the Cloud, integrate digital processes and take on IT systems operation and support. As a part of the Bertelsmann-owned Arvato network, we have the unique capability to work across the entire value chain. Our business relationships are personal; we work with our clients as partners, so that together we can achieve long-term success.

